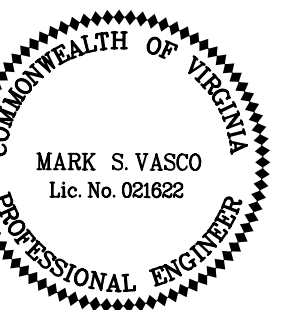


CITY OF
BRISTOL, VIRGINIA
300 LEE STREET
BRISTOL, VA 24201
(276) 645-7470

REVISIONS
DATE

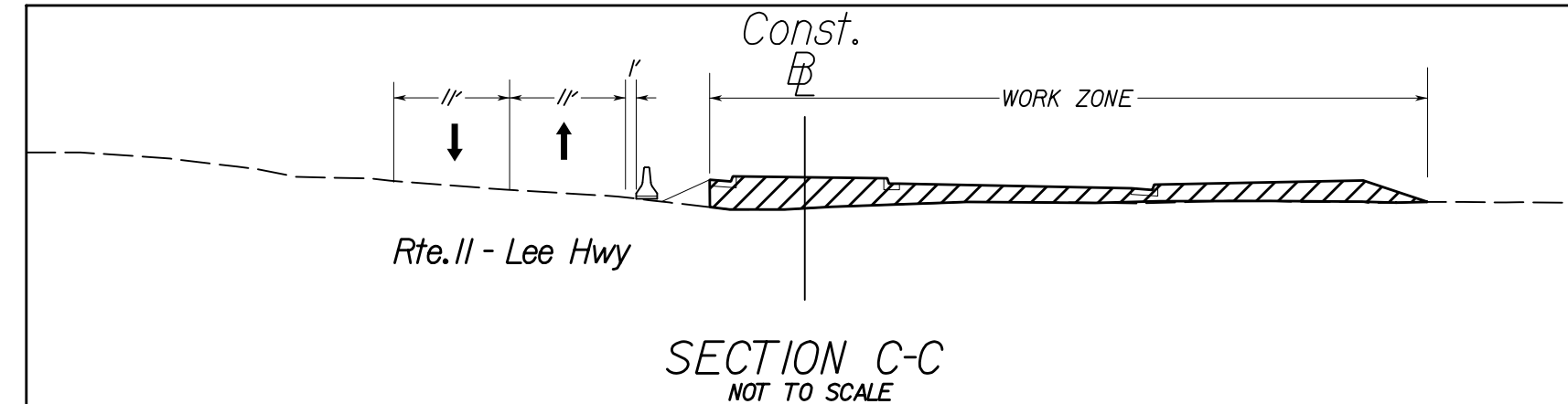
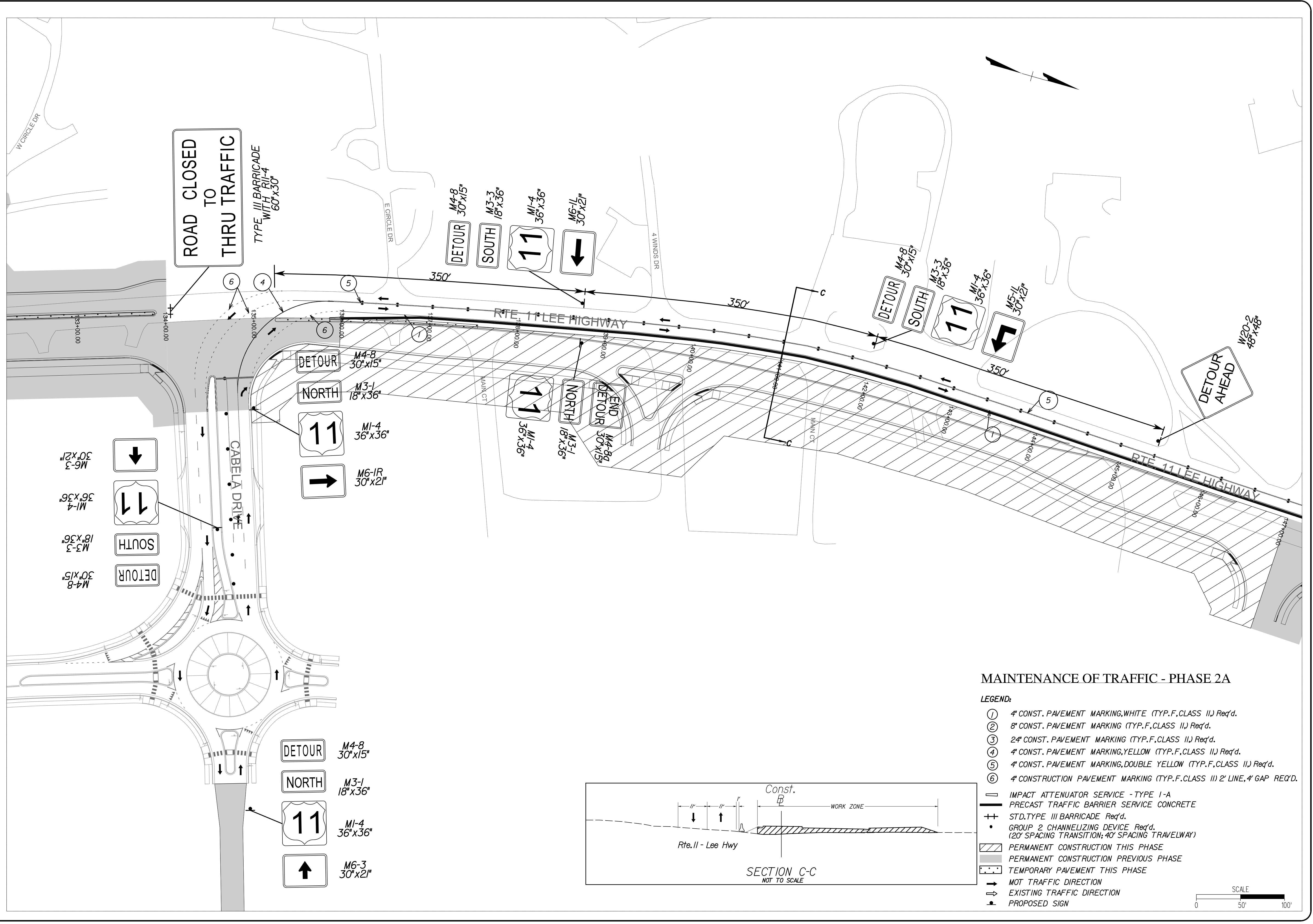


WIDENING OF
LEE HIGHWAY
MOT
UPC 105753

MAINTENANCE
OF TRAFFIC
PHASE 2A

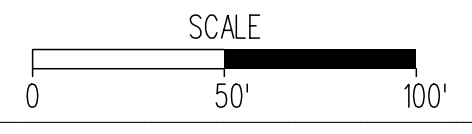
DATE:
MAY 2017
DRAWING NO.
XXX-XXX
FILE NAME:
LEE HWY EXIT 5

SHEET NUMBER
8.12 OF 11



MAINTENANCE OF TRAFFIC - PHASE 2A

- LEGEND:**
- ① 4" CONST. PAVEMENT MARKING, WHITE (TYP. F, CLASS II) Req'd.
 - ② 8" CONST. PAVEMENT MARKING (TYP. F, CLASS II) Req'd.
 - ③ 24" CONST. PAVEMENT MARKING (TYP. F, CLASS II) Req'd.
 - ④ 4" CONST. PAVEMENT MARKING, YELLOW (TYP. F, CLASS II) Req'd.
 - ⑤ 4" CONST. PAVEMENT MARKING, DOUBLE YELLOW (TYP. F, CLASS II) Req'd.
 - ⑥ 4" CONSTRUCTION PAVEMENT MARKING (TYP. F, CLASS II) 2' LINE, 4' GAP REQ'D.
 - IMPACT ATTENUATOR SERVICE - TYPE I-A
 - PRECAST TRAFFIC BARRIER SERVICE CONCRETE
 - ++ STD. TYPE III BARRICADE Req'd.
 - GROUP 2 CHANNELIZING DEVICE Req'd. (20' SPACING TRANSITION; 40' SPACING TRAVELWAY)
 - ▨ PERMANENT CONSTRUCTION THIS PHASE
 - ▩ PERMANENT CONSTRUCTION PREVIOUS PHASE
 - TEMPORARY PAVEMENT THIS PHASE
 - MOT TRAFFIC DIRECTION
 - ⇄ EXISTING TRAFFIC DIRECTION
 - PROPOSED SIGN



7/17/2017