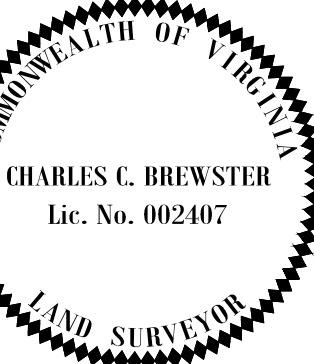
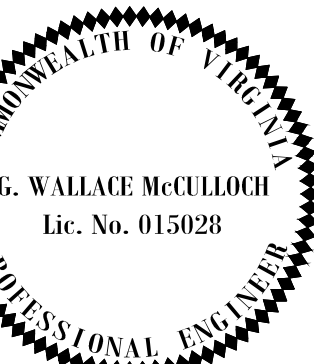




CITY OF
BRISTOL, VIRGINIA
300 LEE STREET
BRISTOL, VA 24201
(276) 645-7470

REVISIONS

DATE

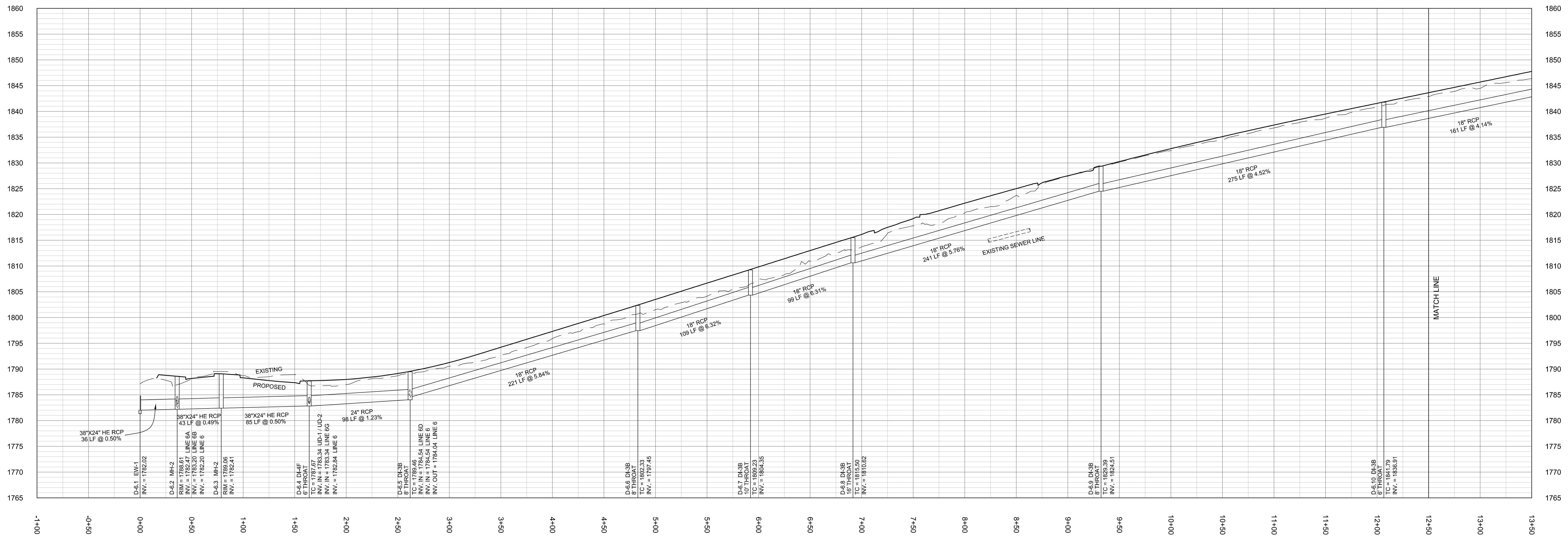


WIDENING OF
LEE HIGHWAY
PHASE - 2
UPC 105753

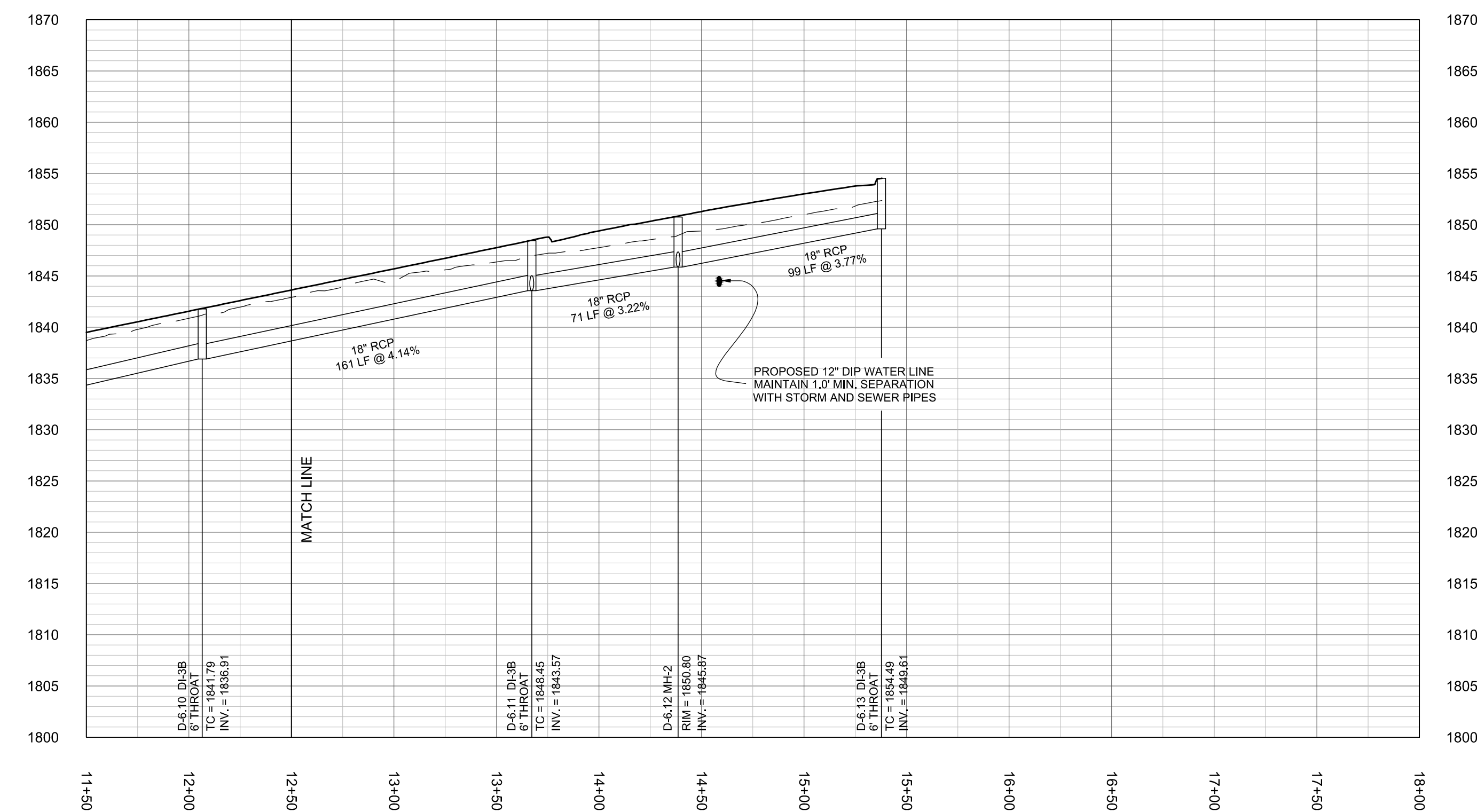
STORM AND SANITARY
SEWER LINE PROFILES

DATE:
JULY 2017
DRAWING NO.
T30-229
FILE NAME:
LEE HWY EXIT 5

SHEET NUMBER
11.5 OF 11



STORM LINE 6



STORM LINE 6 (CONT.)